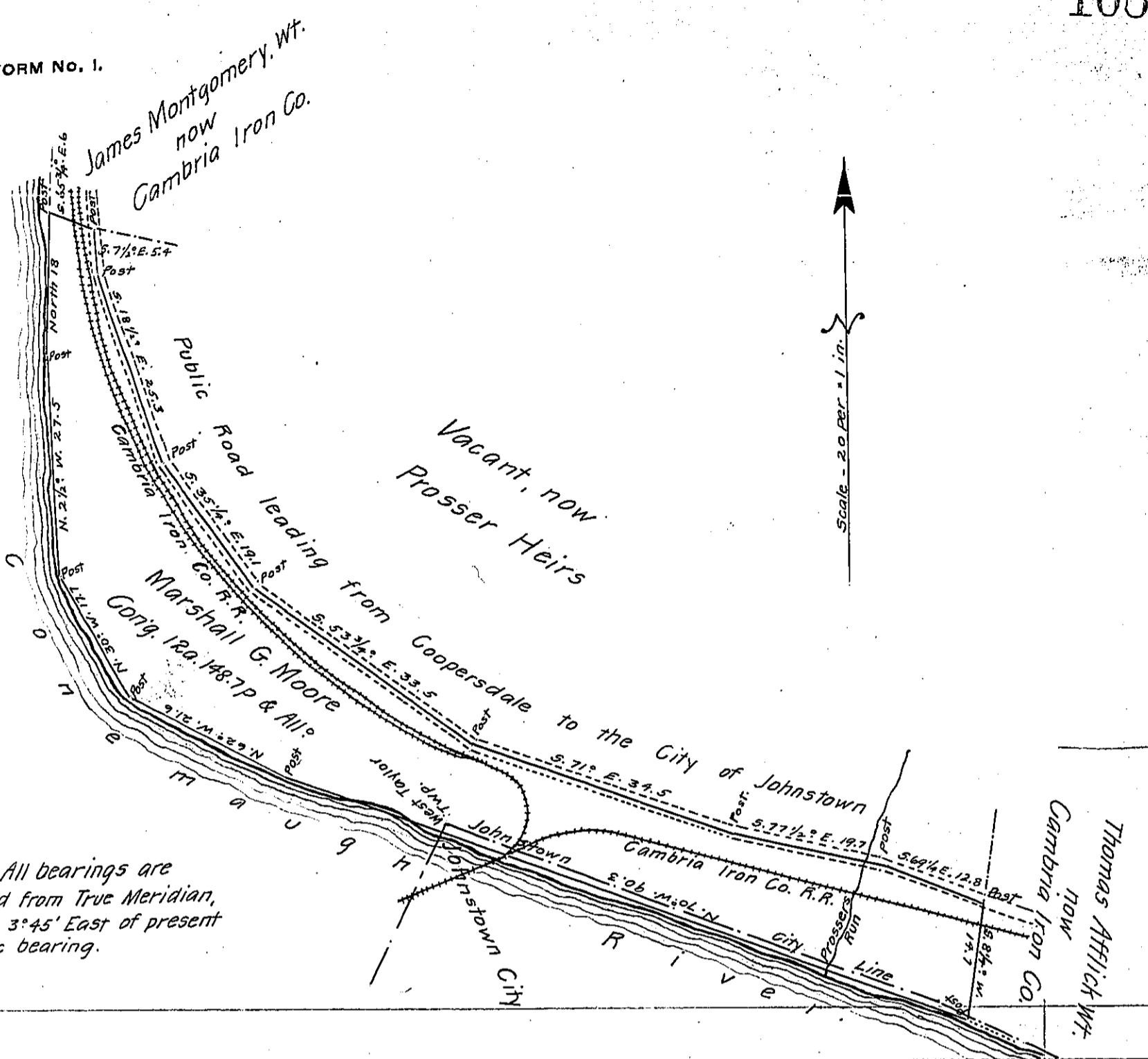


FORM No. 1.



Note. All bearings are calculated from True Meridian, which is 3°45' East of present Magnetic bearing.

A Draft of a tract of land situated <sup>Partly</sup> in the Township of West Taylor and Partly in the City of Johnstown, and County of Cambria, containing Twelve acres, 148.7 perches and allowance of six per cent. for roads, etc. Surveyed the Second day of December 1897, in pursuance of a warrant granted to Marshall G. Moore dated the first day of December 1897.

S. G. Fetterman.

To James W. Latta, Esq.,  
Secretary of Internal Affairs } County Surveyor

IN TESTIMONY that the above is a copy of the original remaining on file in the Department of Internal Affairs of Pennsylvania, made conformably to an Act of Assembly approved the 16th day of February, 1833, I have hereunto set my Hand and caused the Seal of said Department to be affixed at Harrisburg, this thirtieth day of March 1906

*Lucas A. Brown*  
Secretary of Internal Affairs.